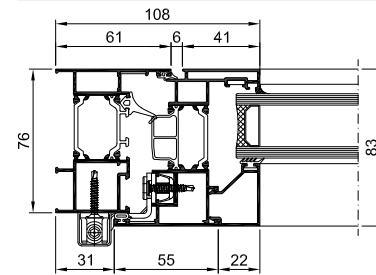
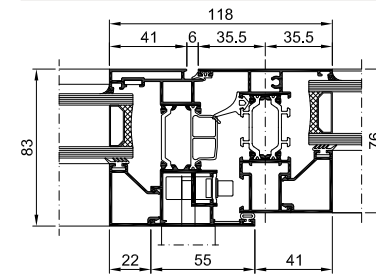




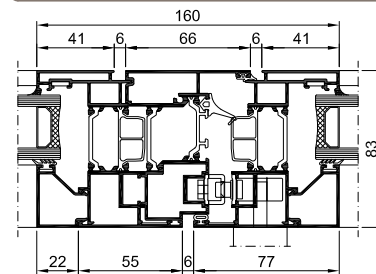
1 Lateral Abatible



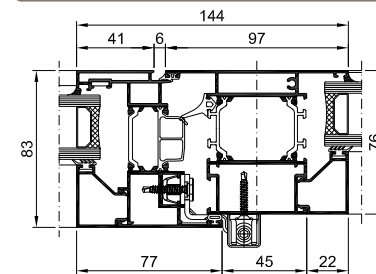
2 Central Fijo - Abatible



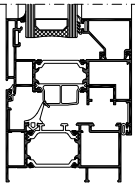
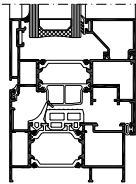
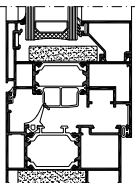
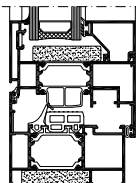
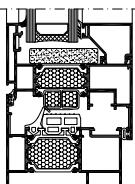
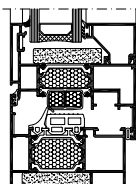
3 Central Abatible



4 Central Fijo - Abatible



CONFIGURACIONES

	BASE Uf = 2,5 W / (m²/K)		BASE+ Uf = 2,3 W / (m²/K)
	ECO Uf = 2,1 W / (m²/K)		ECO+ Uf = 1,9 W / (m²/K)
	PLUS Uf = 1,7 W / (m²/K)		LUX Uf = 1,4 W / (m²/K)

Descripción

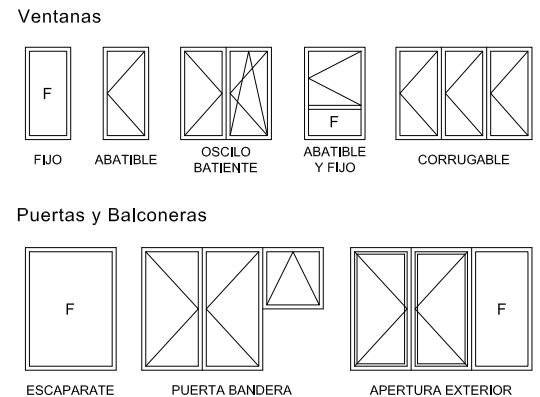
- Carpintería abisagrada con rotura de puente térmico.
- Marco de 76 mm. y hoja de 83 mm.
- Juntas de estanqueidad en EPDM.
- Huevo de acristalamiento entre 25 y 60 mm.
- Poliamida 6,6 con 25% de fibra de vidrio.
- Herraje canal 16: 12 / 20 - eje 13 mm.

Ensayos Marcado CE

AIRE	4
AGUA	E 1500
VIENTO	C5
TÉRMICA	Uw = 0,8 W / m²
ACÚSTICA	46 ** dBA
CARGAS	APTO

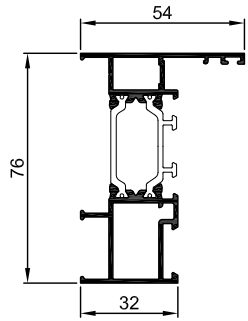
* Transmitancia Térmica calculada para carpintería de 6,48 m² con vidrio bajo emisivo de altas prestaciones térmicas
 ** Ventana de 1,23x1,48 m. y vidrio 8.8SC/14/6.6SC

Aperturas

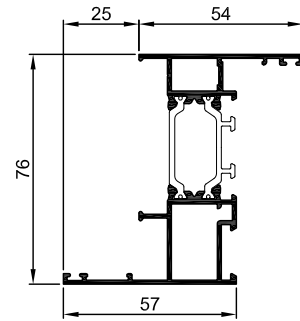


Perfiles A14.E2.RPT16

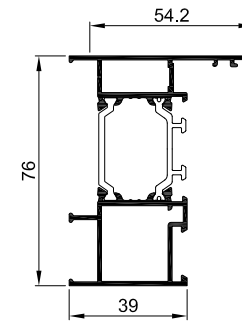
754200



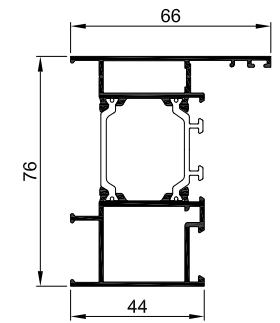
754201



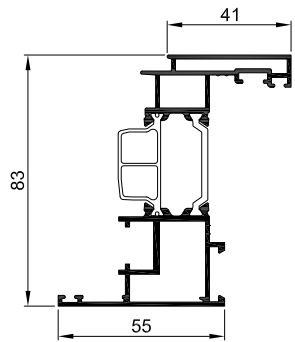
754203



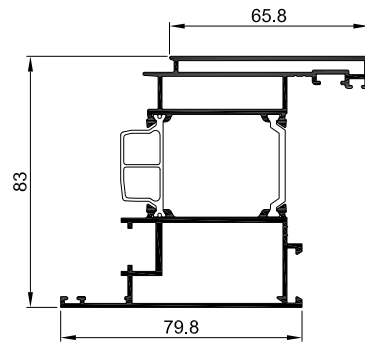
754205



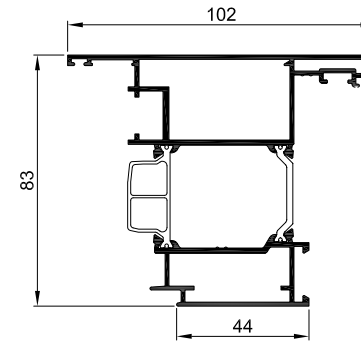
754217



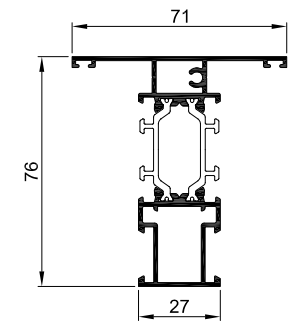
754222



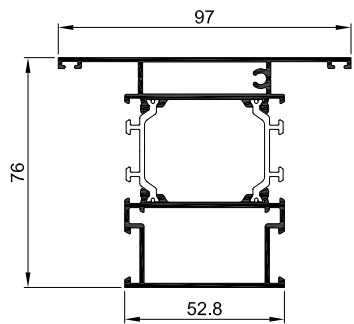
754232



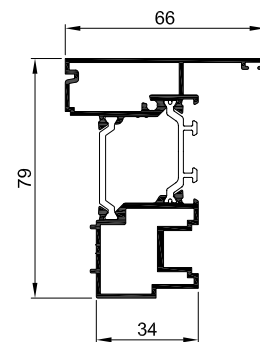
754240



754241



754251



754260

